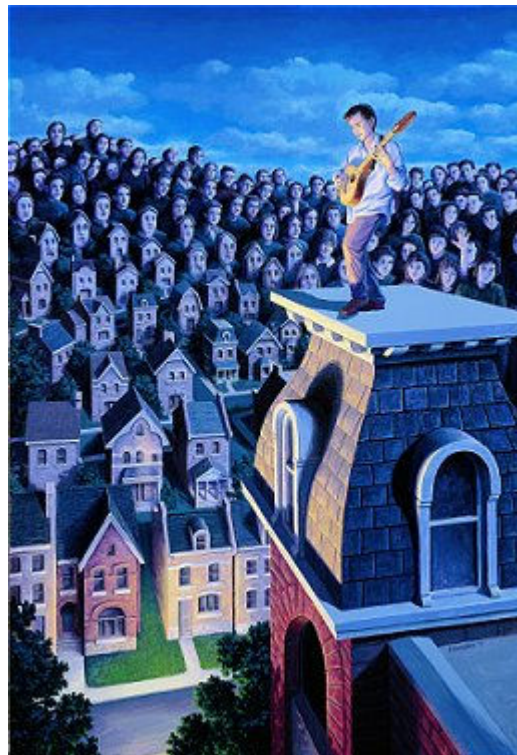


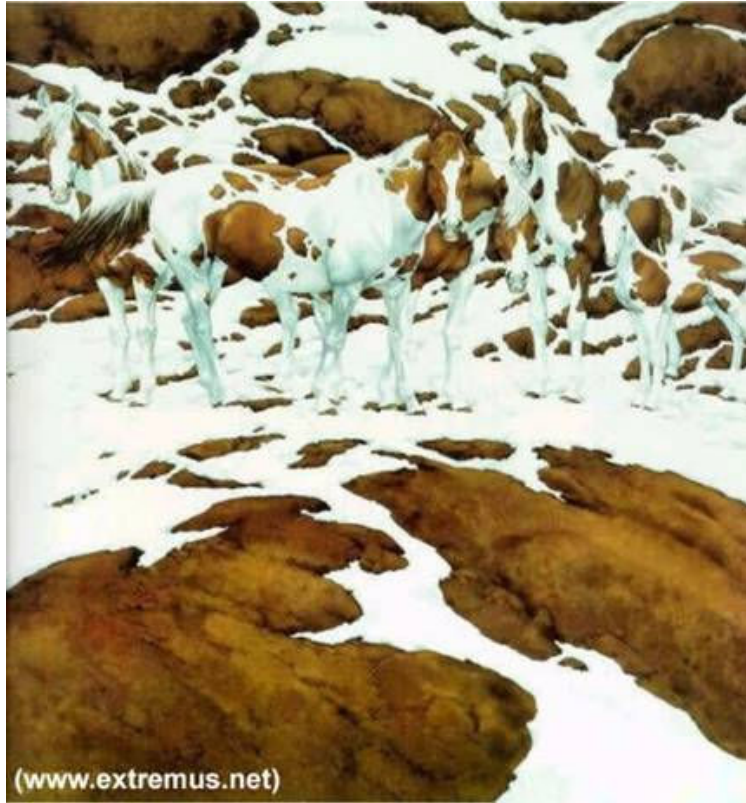
Cool arts that will play with your mind



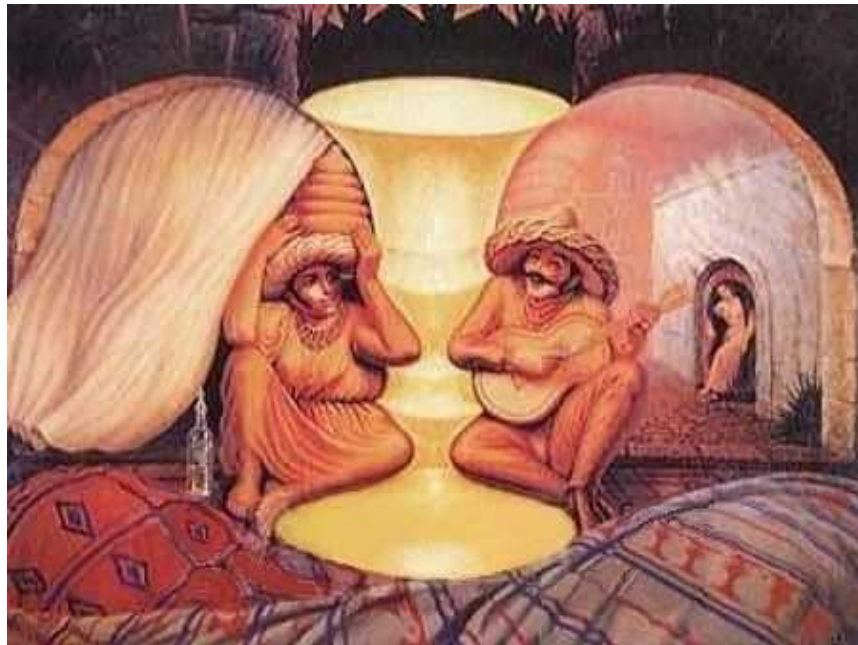
11 SHIPS OR 3 SHIPS & 8 ARCHES?



DO YOU SEE FACES OR ALL HOUSES?



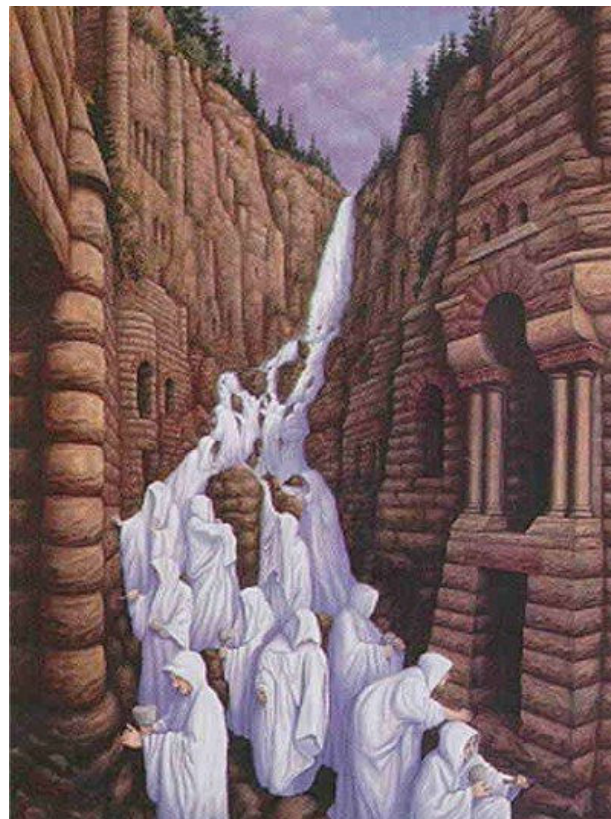
How many horses in this picture? Should find 7



PEOPLE OR FACES ?



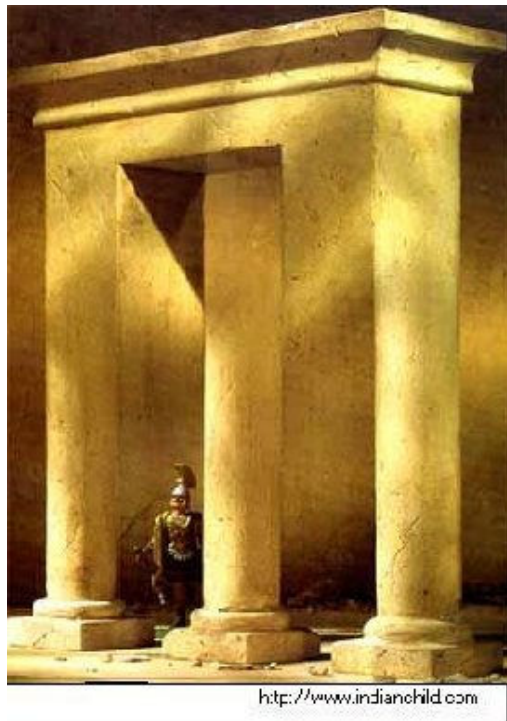
A PICTURE PUZZLE!



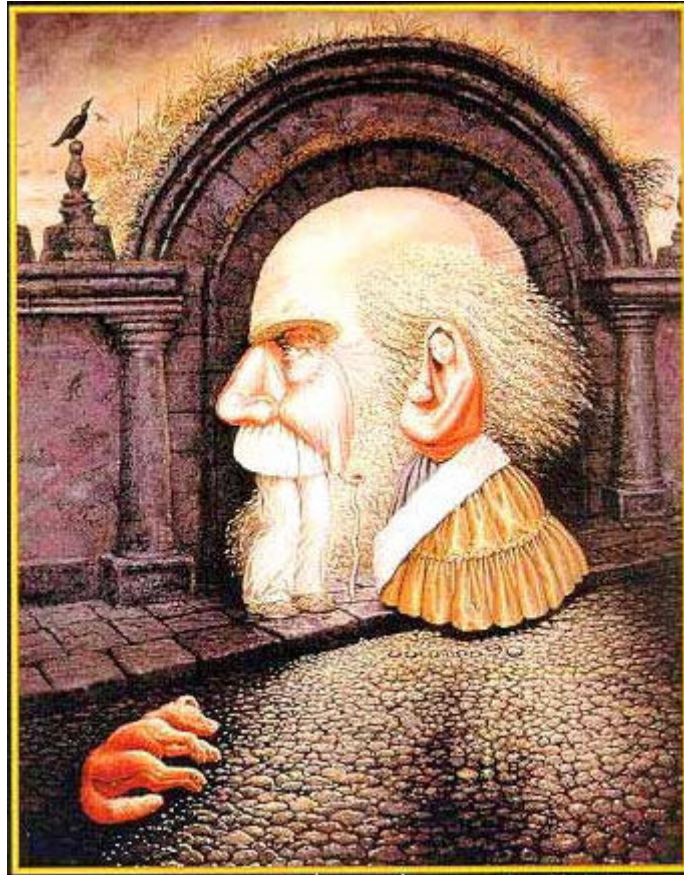
HOW MANY PEOPLE?



SEE MORE THEN ONE DEER?

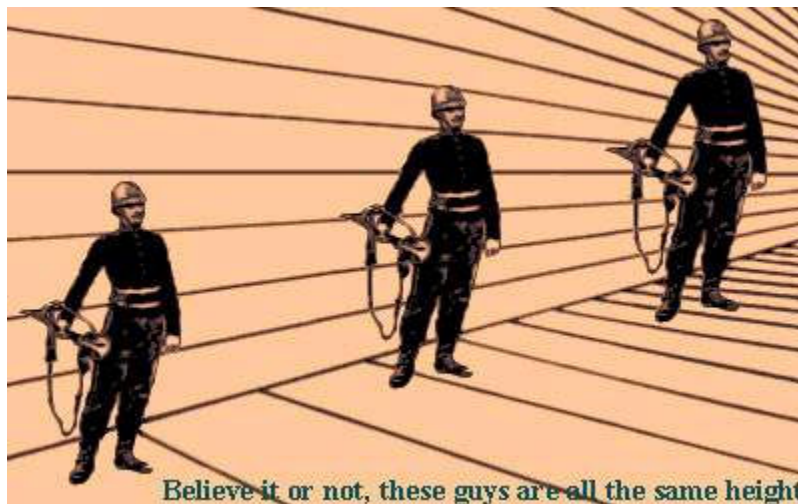


Look at the middle column. Where does it end?



DO YOU SEE FOUR PEOPLE?

Who is the tallest?





A face? . Or, the word 'liar' ?

NEXT:

What do you see here?

Do you see the word 'LIFT'?

Or, a bunch of black splotches ?



***GIRLS ARE ABLE TO SPOT THE WORD 'LIFT'
EASILY. MEN FIND IT DIFFICULT TO SEE THE
WORD 'LIFT'!!!***

NEXT? FIND THE FACES:

There are 11 human faces in the picture. Can you find them all ?

Normal people find 4 or 5 of them.

If you find 8 of them, you have a extraordinary sense of observation.



If you find 9 of them, you have a sense of observation above of the average.

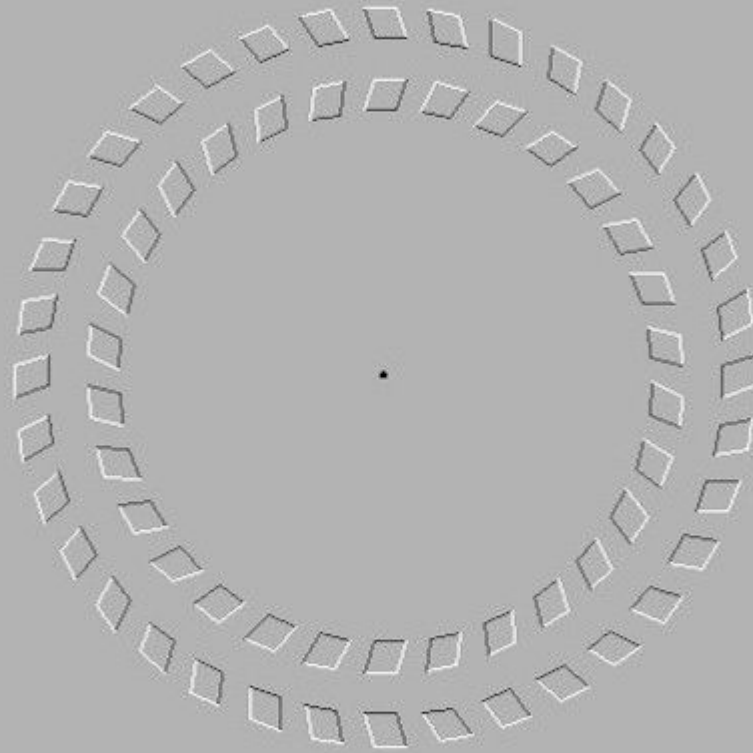
If you find 10 of them, you are very observer.

If you find 11 of them, you are extremely observer.

*If you can't see the baby in the picture, don't give up.
It's really cool when it actually appears.*



THE LAST ONE:



FOCUS ON THE DOT IN THE CENTRE AND MOVE YOU HEAD BACKWARDS AND FORWARDS.
WEIRD HEY...